

## Package Contents



SF550 device



Micro USB cable

Charger

Screen Guard

SIM Remover



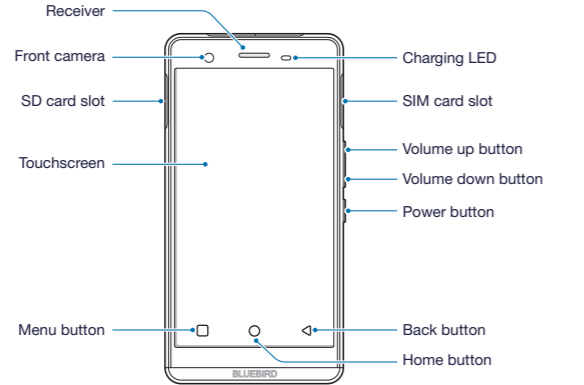
The illustrations may differ from your actual items.

## Accessories

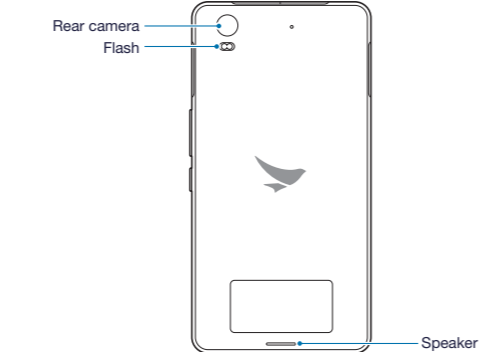
Protective Case, Neck Strap

## Product Overview

### Front



### Back

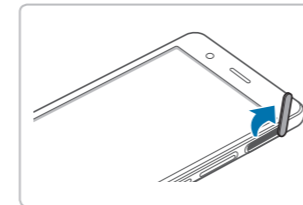


### Bottom and Top

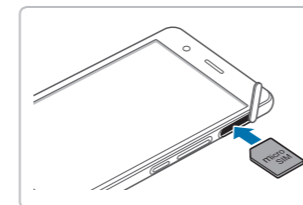


## Inserting a Micro SIM card

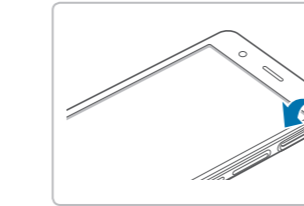
- 1 Open the cover to the SIM card slot on the right side of your device.



- 2 Insert a micro SIM cards into the slots. Make sure that the gold contacts on the cards are facing down.

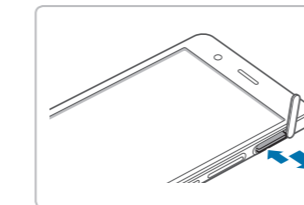


- 3 Close the cover of the SD card slot.



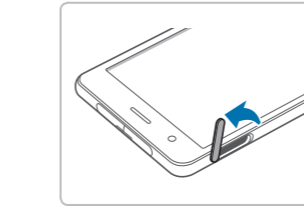
### Removing a Card

Press the micro SIM card into the slot to release, and pull it to remove.

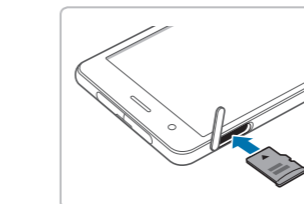


## Inserting a Micro SD Card

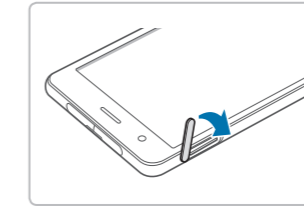
- 1 Open the cover to the SD card slot on the left side of your device.



- 2 Insert a micro SD card into the slot. Make sure that the gold contacts on the card are facing down.

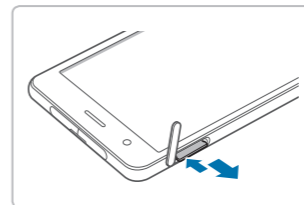


- 3 Close the cover of the SD card slot.



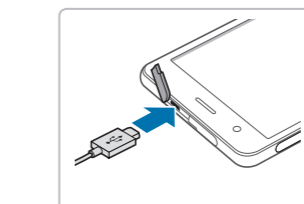
### Removing a Card

Press the micro SD card into the slot to release, and pull it to remove.



## Charging the Battery

- 1 Plug the micro 5-pin end of the charger into the multi-purpose jack on the top of the device.
  - The charging LED turns red when the battery is charging.
  - The charging LED turns green when the battery is fully charged.



- 2 Connect the micro USB cable with power adapter and then plug the charger into a power outlet.

ENTERPRISE FULLTOUCH HANDHELD COMPUTER

# SF550

QUICK  
GUIDE

BLUEBIRD





## BLUEBIRD CUSTOMER SERVICE

### Operating Hours

Monday to Friday 9:30 A.M. - 6:30 P.M.  
(GMT Time: +9 Hours)  
The center is closed on Saturdays,  
Sundays, and Korean national holidays.

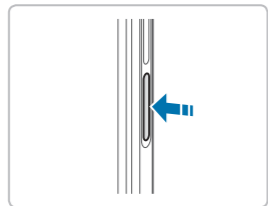
### Customer Service Center

#1103, Gplus Kolon Digital Tower 11F,  
Digital-ro 26-gil 123, Guro-gu, Seoul,  
Republic of Korea(08390)

Bluebird constantly strives to bring utmost satisfaction to all our customers.

## Turning the Device On or Off

### Turning the Device On



Press and hold the Power button for a few seconds.

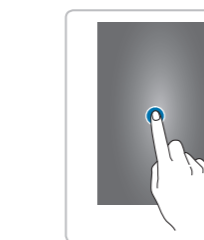
### Turning the Device Off

- 1 Press and hold the Power button for a few seconds.
- 2 Tap **Power off**.

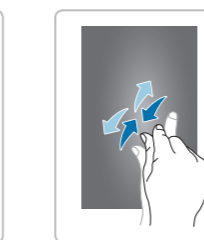
- ✔ To turn the screen on or off, press the Power button.
  - ✔ Registering the accounts without turning on the Wi-Fi may incur extra charges depending on your data plan.
- ⚠ Do not turn off the device by removing the battery, as this may damage the device.

## Using the Touchscreen

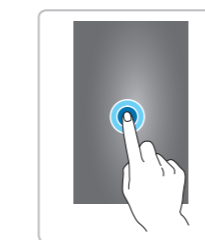
Use finger gestures to use the touchscreen effectively.



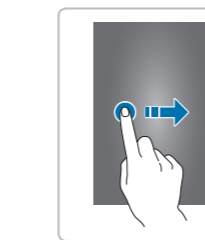
Tap



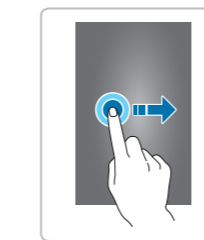
Zoom in or out



Tap and hold



Swipe



Drag

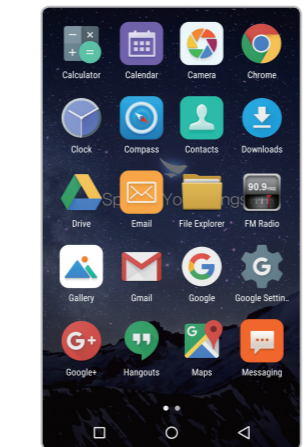
## Screen Overview

The Home screen is the starting point for all apps and features.



Tap on the Home screen. The Apps Screen appears.

Swipe the screen to search for an app you want to open or a feature you want to use.



## Connecting to a Wi-Fi Network

On the Home screen, tap > **WLAN**.

Turn on a Wi-Fi networking and tap the network you want to join.

- ✔ If necessary, enter the password for the network. If you don't know the password, contact the administrator for the network.

## Connecting to a Bluetooth Device

On the Home screen tap > **Bluetooth**.

Turn on a Bluetooth feature and tap the device name you want to pair.

## More Information

### Warranty Information

Bluebird Inc. (hereinafter referred to as Bluebird) provides the warranty service for its products in compliance with the Bluebird's warranty program.

Upon receiving a notification on a defect of its product within the range of warranty during the warranty period, Bluebird will repair or replace the defective product according to its warranty policy.

If the defective product within the range of warranty is not repairable or replaceable, Bluebird shall refund the purchasing price within a designated period from the date of receiving a notice of defect.

Bluebird assumes no responsibility for repairing, replacement or refund until it receives the defective product from the customer. The replacement shall be equivalent to a new product in the aspect of performance.

This warranty is applied to software products only when the programming commands are not executed. Bluebird does not guarantee interruption-free or error-free performance.

For more warranty information, see the User Manual.

### User Manual

For more details on your device, you can download User Manual from [www.mypidion.com](http://www.mypidion.com). The paper version may be available for some regions.