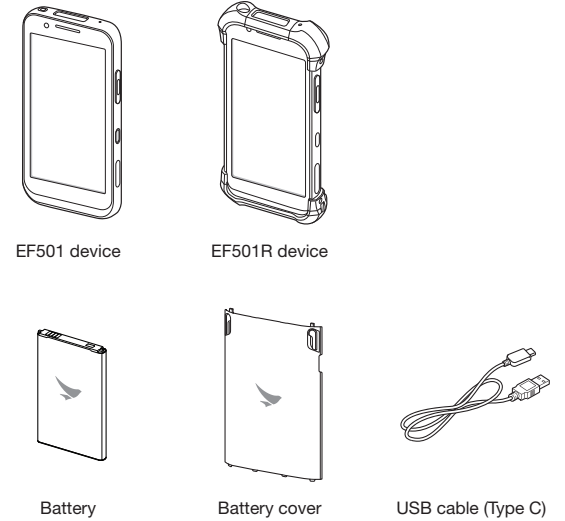


Package Contents

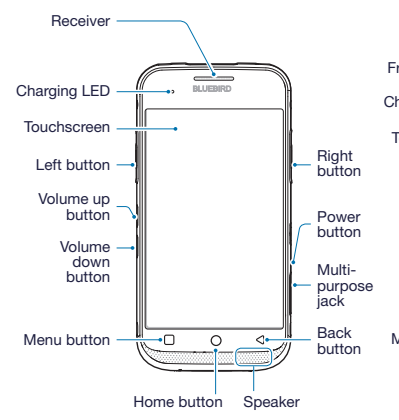


The illustrations may differ from your actual items.

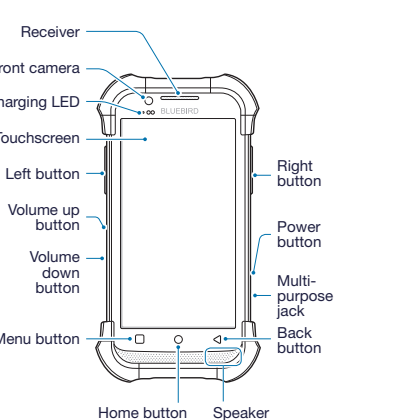
Product Overview

Front

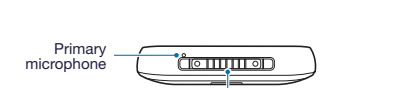
EF501



EF501R

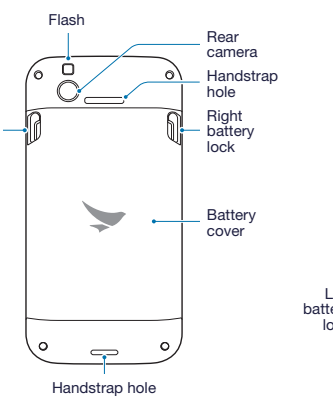


Bottom and Top [EF501]

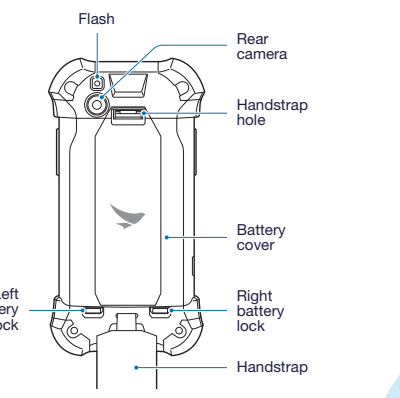


Back

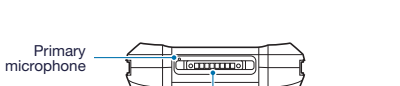
EF501



EF501R

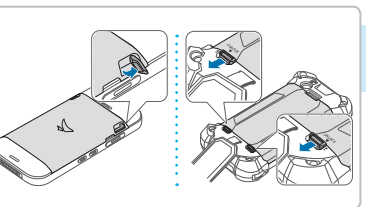


Bottom and Top [EF501R]

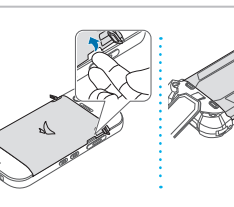


Inserting the inner components

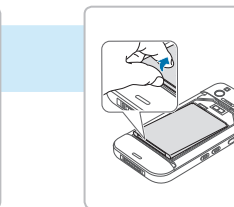
- Untie the handstrap and slide down the battery locks to unlock the battery cover.



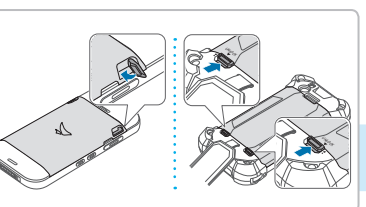
- Use the notch and lift the battery cover. Remove the cover completely.



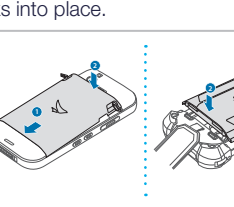
- Lift the battery out of the compartment with your fingernail, if necessary.



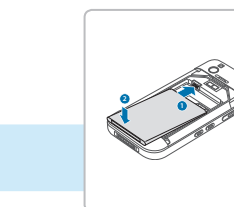
- Slide up the battery locks to lock the battery cover.



- Insert the top of the cover first and then press around the edges of the cover until it clicks into place.



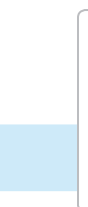
- Insert the battery. Make sure the gold contacts are aligned.



- Slide the fasteners and lift them up for opening.



- Insert micro SIM cards and a micro SD card into each slot.



- Slide the SAM card into the slot.



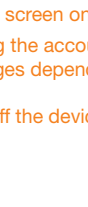
- Lift down the fasteners and slide them for locking.



- Open the cover of multi-purpose jack.



- Plug the end of the charger into the device's multi-purpose jack.



- Connect the USB cable with power adapter and then plug the charger into a power outlet.



If you want to remove the inner components, follow this steps in reverse.



It will click when it is properly inserted.



You can also charge the device with the optional cradle.



The charging LED turns red when the battery is charging.



The charging LED turns green when the battery is fully charged.



To turn the screen on or off, press the Power button.



Registering the accounts without turning on the Wi-Fi may incur extra charges depending on your data plan.



Do not turn off the device by removing the battery, as this may damage the device.



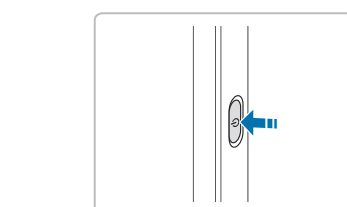
Charging the Battery

Turning the Device On

- Press and hold the Power button for a few seconds.



- Press and hold the Power button for a few seconds.



- Press and hold the Power button for a few seconds.

Turning the Device Off

- Press and hold the Power button for a few seconds.

- Tap **Power off**.

- Press and hold the Power button for a few seconds.

- Press and hold the Power button for a few seconds.

- Press and hold the Power button for a few seconds.



BLUEBIRD CUSTOMER SERVICE

Operating Hours

Monday to Friday 9:30 A.M. - 6:30 P.M.
(GMT Time: +9 Hours)
The center is closed on Saturdays,
Sundays, and Korean national holidays.

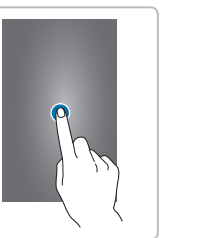
Bluebird constantly strives to bring utmost satisfaction to all our customers.

Customer Service Center

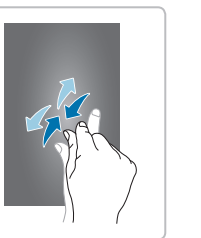
#1103, Gplus Kolon Digital Tower 11F,
Digital-ro 26-gil 123, Guro-gu, Seoul,
Republic of Korea(08390)

Using the Touchscreen

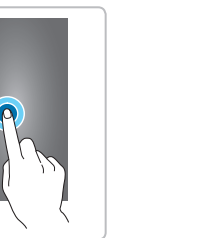
Use finger gestures to use the touchscreen effectively.



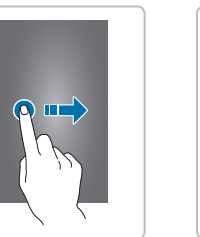
Tap



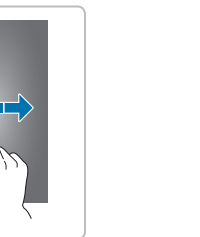
Zoom in or out



Tap and hold



Swipe



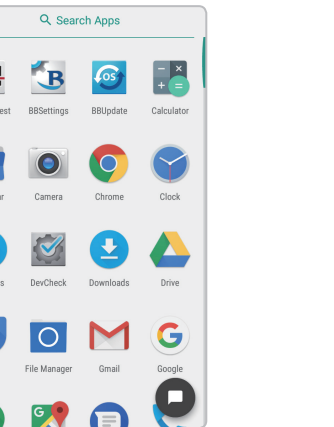
Drag

Screen Overview

This screen is the starting point for all apps and features.



Swipe the screen to search for an app you want to open or a feature you want to use.



Connecting to a Wi-Fi Network

On the Home screen, tap > **Wi-Fi**.

Turn on a Wi-Fi networking and tap the network you want to join.

If necessary, enter the password for the network. If you don't know the password, contact the administrator for the network.

Connecting to a Bluetooth Device

On the Home screen tap > **Bluetooth**.

Turn on a Bluetooth feature and tap the device name you want to pair.

Accessories

- Cradles**
- 1-slot charging cradle: One charging slot for a handset, one charging slot for a spare battery, one USB port (Type C)
 - 4-slot charging cradle: Four charging slots for handsets, four charging slots for spare batteries, one USB port (Type C)
 - 1-slot Ethernet cradle: One charging slot for a handset, one charging slot for a spare battery, one USB port (Type C), Ethernet port
 - 4-slot Ethernet cradle: Four charging slots for handsets, four charging slots for spare batteries, one USB port (Type C), Ethernet port

The power adapter, AC power plug and AC power cable require the use of charging cradles.

- Batteries/ Battery Covers**
- Standard battery: 3,200 mAh
 - Extended battery: 6,400 mAh
 - Standard battery cover
 - Extended battery cover

- Vehicle Accessories**
- Vehicle charger
 - Vehicle mounting cradle

- Scanning Accessories**
- RFID sled

- Carrying Accessories**
- Handstrap

If you want to purchase a handstrap, please ask a sales representative.

- Other Accessories**
- Stylus pen
 - Protective film
 - Adapter plug (220 V)
 - Power adapter for direct charging
 - Pistol grip
 - User manual
 - Quick guide

More Information

Warranty Information

Bluebird Inc. (hereinafter referred to as Bluebird) provides the warranty service for its products in compliance with the Bluebird's warranty program.

Upon receiving a notification on a defect of its product within the range of warranty during the warranty period, Bluebird will repair or replace the defective product according to its warranty policy.

If the defective product within the range of warranty is not repairable or replaceable, Bluebird shall refund the purchasing price within a designated period from the date of receiving a notice of defect.

Bluebird assumes no responsibility for repairing, replacement or refund until it receives the defective product from the customer. The replacement shall be equivalent to a new product in the aspect of performance.

This warranty is applied to software products only when the programming commands are not executed. Bluebird does not guarantee interruption-free or error-free performance.

For more warranty information, see the User Manual.

For more details on your device, you can download User Manual from www.mypidion.com. The paper version may be available for some regions.

For more details on your device, you can download User Manual from www.mypidion.com. The paper version may be available for some regions.

For more details on your device, you can download User Manual from www.mypidion.com. The paper version may be available for some regions.

For more details on your device, you can download User Manual from www.mypidion.com. The paper version may be available for some regions.

For more details on your device, you can download User Manual from www.mypidion.com. The paper version may be available for some regions.

ENTERPRISE FULLTOUCH HANDHELD COMPUTER

EF501/EF501R

QUICK GUIDE

